



Rosebank Public School

A-Z

Rosebank Public School Information

Address: 340 Rosebank Road, Rosebank 2480

Telephone: 6688 2126

Fax: 6688 2281

Email: Rosebank-p.school@det.nsw.edu.au

Web: www.rosebank-p.schools.nsw.edu.au

Region: North Coast – Lismore District

The things that matter....

Late in 2014, the Rosebank school community came together to develop its *School Plan 2015-2017*. The plan states our agreed strategic directions. Our strategic directions specify the things that matter to our school community. Decision-making about programs, practices and resources are made with these things in mind:

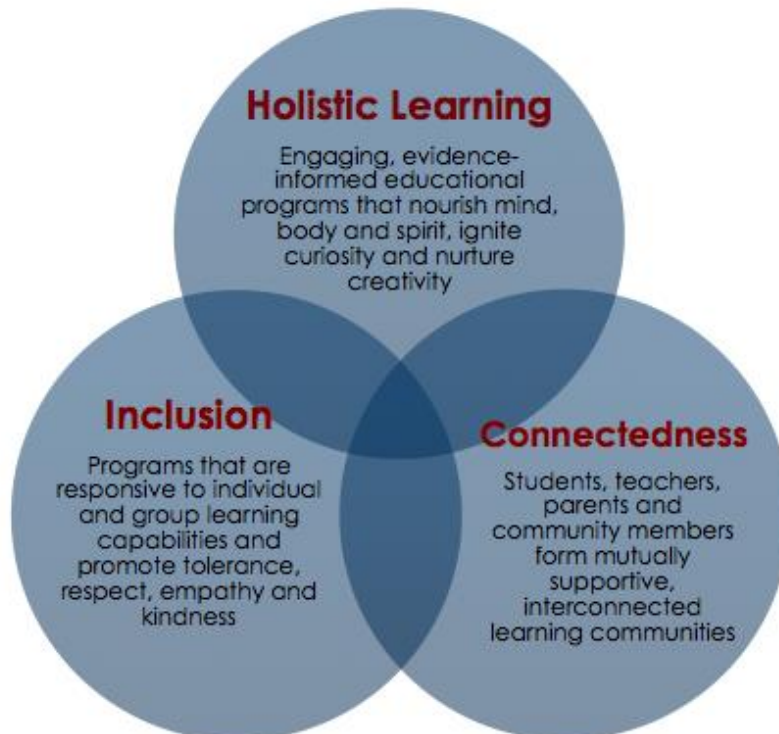


Table of Contents

Welcome	4
Our Team	5
School Map	6
Aboriginal Culture and Heritage	7
Academic Excellence	7
Assembly	8
Attendance	8
Awards	9
Behaviour	9
Best Start	10
Birthdays	11
Books	11
Canteen	11
Creative and Performing Arts	12
Curriculum Programs	13
Entrepreneur-ship	13
Excursions/Incursions	14
Food (Goes Nude)	14
Head Lice	14
Learning Languages	15
Learning Support	15
Library	15
Lost Property	15
Money Matters	15
Multicultural Perspectives	16
Music Tuition	16
Newsletter	16
Parent Teacher Conferences	17
Parents and Citizens (P&C)	17
Playground Supervision	17
Reports	17
Running Late	17
School Holidays	18
School Hours	18
Social and Emotional Learning	18
Student Leadership	18
Sun Safety	19
Travel to/from School	19
Uniform	20
Voluntary Contributions	21
125 th Anniversary	21

Welcome to Rosebank



We are honoured to partner with you in your child's education. If you have not yet enrolled, but are looking for a school that will provide a warm, nurturing and intellectually invigorating environment where your child will grow and thrive – you will find that here.

Rosebank Public School is a beautiful and historic school, much loved by its community. The school was founded in 1891 to provide schooling for early settlers. In 2016, we celebrate 125 years of quality education at Rosebank PS.

The school is nestled in extensive, leafy grounds that include an oval, multi-purpose hard court, cubby house, sandpit, shaded playground with flying fox, vegetable garden, lookout, reconciliation garden and venerable trees.

By working in cooperation with other small schools in the First North Community of Schools, Rosebank is able to offer extension and enrichment activities as well as the opportunity to compete in sporting carnivals. In our small multi-age classes, teachers strive to deliver every child with a highly personalised educational program. Our school is run in consultation with parents, students and the school community. It is a collaborative endeavour that we look forward to sharing with you.



Abigail Sawyer
Proud Principal
Rosebank Public School

Our Team



**Principal:
Ms Abigail Sawyer**



**School Administration Manager:
Mrs Kim Shailes**



**Class Teacher:
Mrs Nicky Hughes**



**Class Teacher:
Mrs Sharley Kiesewetter**



**Class Teacher:
Ms Jennifer Wright**



**Release Teacher:
Mrs Michelle Gallpen**



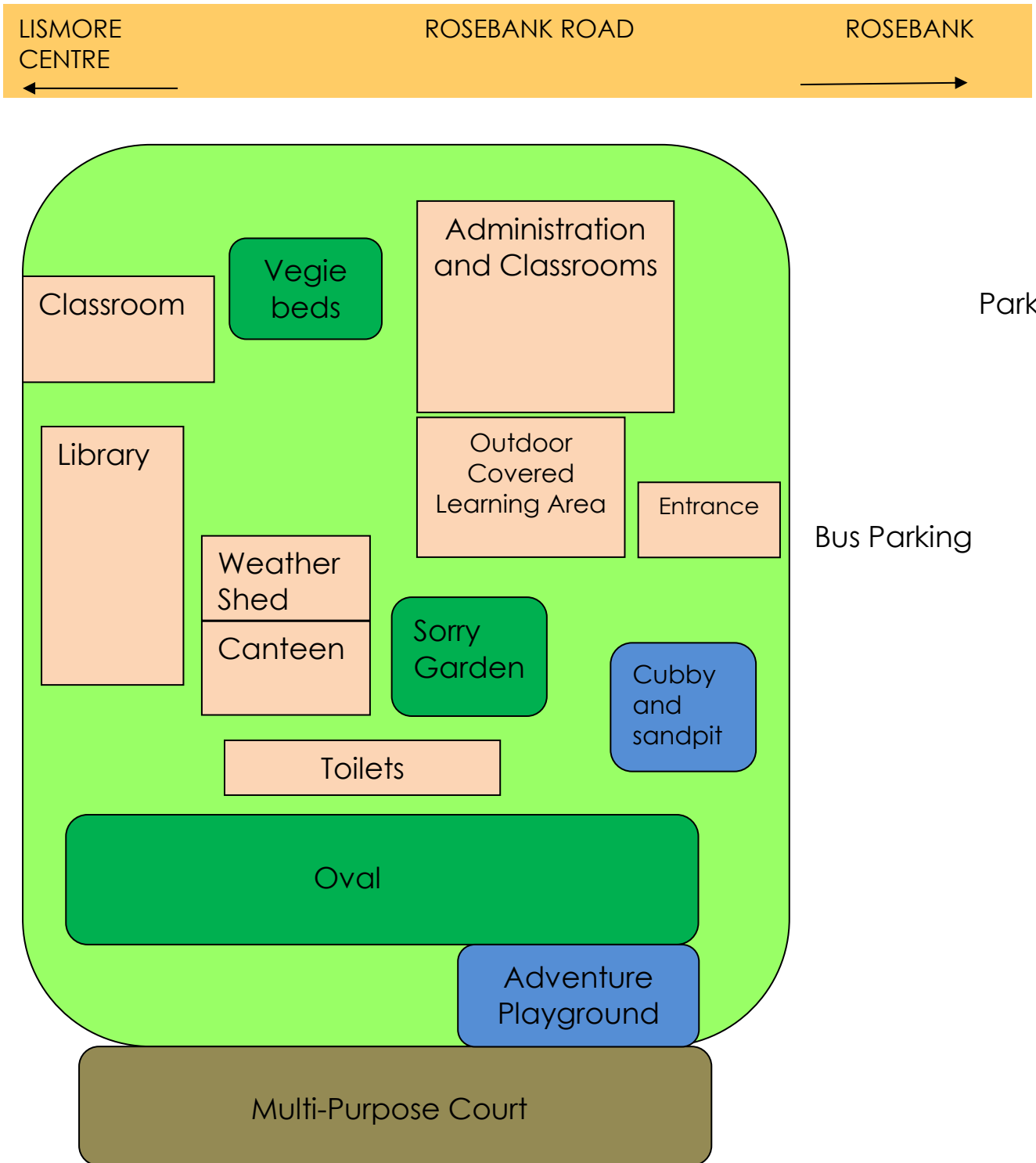
**Music Guru:
Mr Oliver Pescia**



**School Administration Officer:
Mrs Helen Harlen**

**Grounds: Mr Phil Robertson
Cleaner: Ms Araluen Bird**

School Map



Rosebank A-Z

Aboriginal Culture and Heritage

At Rosebank, we pay respect to elders past and present of the Wijabul Wiyabal people and other peoples of the Bundjalung Nation. They, the “Clever People”, were the first custodians of Rosebank land, which has long been a place of learning for Aboriginal people.

The Rosebank school year begins with a traditional *Welcome to Country*, performed by one of the local Bundjalung mob. The ceremony is intended to cleanse the spirit and prepare us for a harmonious and happy year of learning together.



The Aboriginal flag flies above our school each day and students acknowledge the traditional owners of the land on which our school stands at each Assembly.

Our Sorry Garden, located at the heart of our school, is a visible symbol of our commitment to ensuring that all students learn about Aboriginal culture and heritage. Our teachers strive to embed Aboriginal perspectives in the life of our school, such as through the telling of Aboriginal stories and choosing to use local Aboriginal language to name our classes. In embedding Aboriginal perspectives, we seek cultural advice from local Aboriginal people.

Academic Excellence

Rosebank has a proud tradition of academic achievement as well as a reputation for nurturing creativity in the performing arts and sporting prowess. In most years, Rosebank students have performed well above national minimum standards and similar schools.

In 2015, 7 out of 11 Year 3 students scored in the Top 2 Bands on the NAPLAN Reading Test. Nine of the same students (82%) scored in the

Top 2 Bands for Writing, and 8 of the 11 students scored in the Top 2 Bands for Numeracy. That is really worth celebrating.

Another thing to note about last year's results is student improvement over time. One of the measures that schools are judged by is the "relative growth" experienced by students between Years 3 and 5. That is, did students improve, stay steady or slip back a little. In 2015, 100% of our Year 5 students achieved greater than or equal to expected growth in reading. Seventy-five per cent of those same students achieved greater than or equal to expected growth in Numeracy and Spelling.

Assembly

A whole school Assembly is held most Friday afternoons during term time. Assemblies are led by Year 6 students and include the National Anthem, class and school awards and sometimes performances and other items. Students of the Week are announced and birthdays celebrated. Parents and other members of the school community are very welcome to join us at Assembly whenever able. Special Assemblies are held on occasions such as Anzac Day and Harmony Day, to which all members of the school community are invited.



Attendance

Parents are responsible for ensuring that children attend school on every day for which instruction is provided, unless prevented from doing so by illness or exceptional circumstances.

A written explanation for absences is required. Alternatively, parents may call the school office to explain student absences. If no note or telephone message is received, the department requires the absence to be noted as "unjustified". Should a student have repeated unjustified absences, or a pattern of sick days without a medical certificate, they are to be referred to the Home School Liaison Officer.

Recently, the Department of Education released a new policy outlining restrictions on the types of absences that a principal may consider “justified”. Principals may only approve absences as justified where a student is ill, on school business (eg: Sports Carnival), or another form of approved leave. If you are going away during term time, call Abigail or pop in to find out if the leave meets the criteria for approved leave.

Why is the policy different now?

Research has shown that regular absences from school have an enormous impact on student achievement and wellbeing. Consider this....

If a student has a day off, once a fortnight, this adds up to 20 days in a school year. Twenty days is the same as missing a tenth of a school year. By Year 10, this would add up to a whole year of school missed!

Awards

Students are all different and are motivated by different things. All teachers foster students' intrinsic love of learning, but many students love to be recognised in other ways as well.

Class teachers use a variety of techniques to recognise student effort and achievement, both in class and in the playground. In addition, our school has a system of awards to encourage sustained effort and acknowledge special achievements. Each week, class teachers select students whose work has been outstanding in some way – perhaps they conquered a personal challenge or were especially kind. These students are given class awards, or might be given a *Student of the Week* award. In 2016, class awards will reflect the Positive Behaviour for Learning (PBL) focus for each week.

Awards are given on Assembly, so the whole school can celebrate and acknowledge the achievement of their schoolmates. Students who have earned three awards (Class Awards or Student of the Week) are asked to bring their certificates back to school and are then given a Bronze Award. Three more awards earns a Silver Award (ribbon) and three more a Gold Award (pennant). Our students cherish these awards...so make sure they keep their certificates in a safe place so they can trade them in.

Behaviour

Rosebank is a PBL School. That is, we promote *Positive Behaviour for Learning*.

PBL is a framework designed to enable high quality learning environments for all students. Implementing PBL involves explicitly teaching and rewarding positive behaviour as well as having clear procedures for responding to any negative behaviour.

Late in 2015, teachers attended training in how to get the program up and running. A community forum was held to gather information about the views of parents and other community members about behaviour at our school. Children and teachers then considered this information and developed a matrix outlining shared expectations for positive behaviour in our school.

The matrix, which you will find at the back of this handbook, outlines our expectations for positive behaviour. Each expectation is the subject of a special PBL lesson, with one lesson delivered in class each week and discussed at Assemblies. Our school rewards program includes recognition of students whose behaviour aligns with our expectations and is supportive of learning.

Students whose behaviour negatively impacts others are encouraged to 'make amends', usually by performing an act of kindness or service. For example, a student who broke some class equipment might be asked to go with a teacher to arrange its repair. When inappropriate behaviours are minor, they are managed by teachers and/or the principal. When inappropriate behaviours are major or repetitive, they are referred to the principal who works with parents to achieve a positive outcome for all students and ensure that school environments return to being safe, harmonious and learning-focused.

As our school is just at the beginning of its PBL journey, our matrix remains a work in progress and is discussed at class meetings, P&C meetings and other decision-making forums. Your feedback on the matrix is invited and encouraged...as it is on all school-related matters. Should you have any questions about PBL and how the program helps us to create safe, harmonious environments where children can focus on learning, please pop in and see Abigail or ask one of the teachers.

Best Start

Upon commencing Kindergarten, all children participate with their class teacher in a Best Start interview. The teacher asks each child questions and engages them in activities designed to gather information about their personal learning capabilities and needs. The information gathered during the Best Start interviews helps us plan personalised learning programs that will respond to the unique characteristics of each learner.

Birthdays

Class teachers would be delighted to help your child celebrate their birthday with their classmates. If you wish to send along a birthday treat, you are very welcome, but not obliged, to.

If you wish to send along birthday cake, please send either enough cupcakes for your child's class or a cake large enough to be shared among their class.

If you are planning to send cake along, please let your child's class teacher know at least a day ahead. Class teachers are aware of any students with allergies or food intolerances. When given notice, teachers can make arrangements so that those children also have a treat provided.



Books and other School Requirements

Each year, parents are asked to make a contribution towards their child's school requirements. The school then purchases all textbooks, stationery items etc that students will need. Parents are also given a small list of personal requirements for each student, such as headphones, that will remain the property of that student and stored in their personal tote tray.

For 2016, the amount required for book contributions is \$60 per student. This amount includes several online subscriptions (Reading Eggs for Junior students, Mathletics for Years K-6) that students will be able to access at home.

Canteen

Each Friday, the P&C operates a canteen. Parents are encouraged to volunteer to be rostered on for canteen, either to set up or serve. Lunch orders are handed in on Friday mornings with the order written on a paper bag and the money placed inside the bag. Canteen menus will be sent home at the start of each year and are available at the school office.

Creative and Performing Arts

Rosebank students enjoy at least 2 hours of CAPA instruction each week. In 2016, this will include 1 hour of specialist music instruction each term as well as other Arts education experiences as follows:

Term 1	Music and Visual Arts/Textiles/Sculpture 1 hour specialist music plus Artist-in-Residence program
Term 2	Music 2 hours specialist music
Term 3	Music and Drama: Whole School Musical 2 hours specialist lessons plus in-class and whole school coaching and rehearsals
Term 4	Music and Visual Arts: 125 th Celebration Art Show 1 hour specialist music plus Artist-in-Residence program

Whole School Musical

In line with our commitment to inclusion, every child in the school plays a part in staging the musical – whether as a musician, prop designer or in a leading role. Children of all ages can audition for parts, which are allocated on the basis of merit and ‘best fit’ for roles. Our gifted music teacher, Oliver Pescia, leads preparations for the musical.

Other opportunities

In addition to specialist in-class instruction, students have additional opportunities to participate in special Creative and Performing Arts. These include enrichment opportunities for talented students (such as ArtSmart and Creative Arts Camp), auditioning for the Small Schools or Opera House Choir, participating in the Lismore Performing Arts Festival and programs such as last year’s Stage 2 Dance Program.



Curriculum Programs

Class programs are designed in line with New South Wales' Board of Studies syllabuses and align with the Australian Curriculum. The philosophy underpinning these documents is outcomes-based education, which means teachers are expected to focus on what students know and can do as a result of teaching and learning.

The Board of Studies specifies the amount of time that should be allocated to each subject area. Rosebank teachers work within the following guidelines to provide well-rounded, rigorous classroom learning programs:

	Proportion: Time	Hours: Min	Hours: Max
English	25% - 35%	6.25	8.75
Mathematics	20%	5	5
Science and Technology	6 % - 10%	1.5	2.5
PDHPE	6 % - 10%	1.5	2.5
HSIE	6 % - 10%	1.5	2.5
Creative Arts	6 % - 10%	1.5	2.5
TOTAL		18.25	23.75



Entrepreneur-ship

Rosebank students participate in shared decision-making about school projects and needs. They then help generate funds to pay for items on their wish list or enable generosity to others.

In 2015, the Senior Class engaged in a weekly Collaboration Challenge, with points awarded to teams based on how well they had performed collaborative tasks. The team with the most points at week's end baked for Friday Canteen, selling their baked goods to raise funds which were then used to purchase special shirts for our departing Year 6 students. In 2015, students also raised funds and contributed towards the cost of yearbooks and a new couch for the Staff Room. Students also raised funds for the victims of the earthquake in Nepal, the Westpac Rescue Helicopter and the Hear and Say Foundation.

Should you have an idea for, and can support, a student-led fundraiser, please share your ideas with us for consideration in class meetings.

Excursions/Incursions

Each term, students will have opportunities to participate in special activities designed to enhance their educational program.

We appreciate that, because of our rich and diverse program of activities, the financial demands that excursions/incursions place on parents can be considerable. In 2016, we plan to limit excursions to one per term. In addition, we may arrange up to one in-school performance or activity per term. This is in addition to school events such as sports carnivals, camps etc.



Food (Goes Nude)

All children are encouraged to be mindful of the waste they are generating each day. Each class has a recycling regime and organic waste is composted. We encourage children to bring lunches that are as 'nude' as possible – that is, no plastic wrap if possible with food wrapped in biodegradable material such as paper towel or baking paper.

Head Lice

Young children like to get up close and personal. Perfect conditions for sharing head lice. Parents are encouraged to check their child's hair regularly. If head lice are found, please treat your child and notify the school.

Learning Languages

At Rosebank, our commitment to inclusion is reflected in our decision to involve all students in learning languages other than English. In 2015, all students K-6 enjoyed learning French and AUSLAN. In future years, we look forward to incorporating Asian languages into our program.

Learning Support

All public schools receive an allocation of funds to enable the provision of learning support for students with additional learning needs. The way in which these funds are used depends on the particular needs of the current student group and individuals. Parents of students with additional learning needs are involved in decision-making. If you feel your child is struggling with an aspect of their schooling, please speak with your child's teacher who will share information about how their needs are being met.

Library

In 2016, Library Day will be THURSDAY for all children. We are striving to 'raise the bar' with our borrowing next year...Special prizes on offer for beaut borrowing.



Lost Property

Rosebank students are encouraged and supported to take responsibility for their belongings. Parents can help them to do this by clearly naming hats, bags, shoes and all other personal belongings. Lost property is stored in a basket in the foyer and cleared at the end of each term.

Money Matters

All money sent to school should be taken to the office as soon as children arrive at school. Parents wishing to make payments for excursions or other school expenses can do so at the office using cash or via EFTPOS.

Multicultural Perspectives

Rosebank places a high value on inclusion and actively teaches children to value and respect difference and diversity. Each year, we celebrate Harmony Day, a day to reflect on the importance of understanding and supporting one another. Class teachers also strive to embed a range of cultural perspectives in their teaching programs, for example, by including stories and songs of various cultures.

Music Tuition

Students may access private music lessons while at school. Oliver Pescia, our school music specialist, offers private tuition in keyboard, vocals, guitar or drums. If you would like your child to participate in private music tuition while at school, please contact Mr Pescia by emailing oliver.pescia@det.nsw.edu.au or telephoning the school office on 6688 2126.



From the beginning of the 2016 school year, fees for private music tuition will be paid in advance for each term. Private music lessons will be conducted before and after school and during class times as negotiated with each class teacher so that students involved do not miss lessons that are important for them.

Newsletter

Our school newsletter is usually sent home each Thursday. Occasionally it goes out early if we need to get a message out. Newsletters are posted on our school website, as are consent forms. If your child misplaces a form or newsletter, you can go to the site and download a new one.

Parent Teacher Conferences

Parents are invited and encouraged to meet with their child's teacher whenever they have a concern or would like to share feedback. In addition to these informal meetings, parent-teacher conferences are scheduled early in Term Three each year and provide a valuable opportunity for information sharing.

P&C

The Rosebank P&C meets on the second Tuesday of each month, soon after school finishes (3.30pm). Attendance at the P&C helps the smooth running of the school, as this is an important place to raise questions or concerns and to participate in decision-making about matters such as uniform policy, school programs and priorities.

Playground Supervision

Teachers are rostered on to supervise students at the following times.

8.30 – 9.00am	Before School
11.00 – 11.30 am	Recess
1.00 – 1.45pm	Lunch

After school, children are collected by the school bus or as soon as possible after the bell by their parents.

Reports

Parents are provided with a report on their child's achievement twice each year, at the end of Semesters One and Two.

Running Late

When, due to circumstances, children arrive at school late, they are required to report to the front office with their parent, who is to sign them in. Similarly, children who are collected early for any reason must be signed out at the office by a parent/carer.

School Holidays and Term Dates 2016

Term 1	Thursday 28 th January to Friday 8 th April
Autumn Vacation	Monday 11 th April to Friday 22 nd April
Term 2	Tuesday 26 th April to Friday 1 st July
Winter Vacation	Monday 4 th July to Friday 15 th July
Term 3	Monday 18 th July to Friday 23 rd July
Spring Vacation	Monday 26 th September to Friday 7 th October
Term 4	Monday 10 th October to Tuesday 20 th December
Summer Holidays	Wednesday 21 st December to Thursday 26 th January

School Hours

8.30-9.00am	Supervised play: COLA
9.00-11.00am	Lessons commence Morning session (Including in-class Fruit Break)
11.00-11.30am	Recess
11.30-1.00pm	Lessons
1.00-1.45pm	Lunch
1.45-2.45pm	Lessons
3.00pm	Home

Social and Emotional Learning

Some years ago, the Rosebank school community invested in the *You Can Do It!* Program, which is designed to help students develop the social and emotional capabilities needed for success in school and life. All Rosebank students participate in weekly *You Can Do It!* lessons, which explore and promote the attributes of Getting Along, Organisation, Persistence, Confidence and Resilience.

Student Leadership

All Year 6 students contribute to the life of the school by taking on extra duties, such as leading Assembly, taking charge of activities with younger students, welcoming visitors and giving Votes of Thanks. They also participate in a structured leadership training program to grow their leadership skills.

The school community also elects a number of student leaders, who take on special responsibilities, including representing the school at functions and hosting special events.

Year 5 students are invited to nominate for student leadership roles during Term 4. Nominees give a speech to the school, outlining their suitability for the role. After speeches, all children and teachers vote.

Vote counting is scrutinised by the outgoing school captain/s and the results announced at the School Presentation Ceremony during the final week of the school year.



2015 School Captains: Bridie Black and Gabe Halligan

Sun Safety

Rosebank is a Sun Smart school. All children must wear a hat whenever they go outdoors to play or learn.

A limited number of spare hats are available for students who forget their hat. However, should all hats be in use, a child who does not have a hat will be required to play undercover.

Travelling to/from School

Most Rosebank students travel to/from school on Bob or Barb's bus.

Contact numbers for bus service:

Bob and Barb Creighton 66252225 or 0402 089 775.

Accessing school bus services

Upon enrolment, parents who wish their children to travel to/from school by bus must complete an application form and sign a Code of Conduct that describes expectations for behaviour on the bus.

Students who do not live on a bus route may be eligible for the Private Vehicle Conveyance subsidy for all or part of their journey. Please see the office staff for further details.

Changes to travel arrangements

Occasionally, children who would normally travel home using the school bus make alternative arrangements. Please inform the school of any changes either by phone 66882126, in writing or in person.

If no note or phone call is received, your child will be placed on the school bus. In emergencies, the Principal will remain with the child at

Rosebank School until such a time as a parent/carer arrives at the school.

Parents who transport their children to and from school are requested to use the side entrance (Tindall Road). Please observe the bus-loading zone.

Uniform

Imagine if players from Manchester United turned up in odd socks...or a Wallaby (as in Rugby, not kangaroo) showed up in his dad's old jersey. Teams wear uniform to say "I am part of something special". We encourage and support all students to wear school uniform.

Uniform Requirements:

	Rosebank Girls	Rosebank Boys
Tops	<p><i>Summer/Winter</i> Rosebank Polo Shirt</p> <p><i>Winter</i> Rosebank Hoodie or Jumper *Children may also wear a plain navy blue turtleneck/skivvy under their polo shirt if they wish</p>	<p><i>Summer/Winter</i> Rosebank Polo Shirt</p> <p><i>Winter</i> Rosebank Hoodie or Jumper *Children may also wear a plain navy blue turtleneck/skivvy under their polo shirt if they wish</p>
Bottoms	<p><i>Summer</i> Rosebank Tartan Skirt Rosebank Tartan Shorts Rosebank Tartan Skort</p> <p><i>Winter</i> Plain black leggings to the ankle Plain black tracksuit pants (No jeans please)</p>	<p><i>Summer</i> Plain black shorts (Without logos or branding)</p> <p><i>Winter</i> Plain black tracksuit pants (No jeans please)</p>
Footwear	<p>Black cotton socks or tights (Without patterns or logos)</p> <p>Black enclosed leather shoes Sports Days: White Sports Shoes optional</p>	<p>Black cotton socks (Without patterns or logos)</p> <p>Black enclosed leather shoes Sports Days: White Sports Shoes optional</p>
Hats	Rosebank Bucket Hat or Rosebank Wide-Brim Hat	Rosebank Bucket Hat or Rosebank Wide-Brim Hat

Our P&C supports our school uniform policy by stocking the canteen with most uniform items. Please see Kim in the Office should you wish to purchase uniform items.



Voluntary Contributions

Parents are encouraged to make a voluntary contribution to the school to support the provision of education programs. In 2015, funds received through voluntary contributions were earmarked for the purchase of sports equipment. We have recently ordered mini goals so that our younger students can also enjoy soccer on the oval.

125th Anniversary

In 2016, Rosebank celebrates 125 years delivering high quality public education to the children of Rosebank and surrounds. A BIG celebration is planned....Stay tuned for ways in which you can help us make next year a very special one.